



From the Editor...

As mentioned in the June newsletter we are putting in a lot of effort to improve the quality of the catalog through corrections. Priority is placed on reduction of missing parts, parts that are not clearly defined and illustration issues. Our goal is to deliver you a world class catalog with correct data and reduce the specifying call volume. Most inquiries we receive are legitimate and we are using your feedback to improve our catalog. However, we are still receiving calls to verify parts which are clearly defined in the catalog. This accounts for about 20% of the call volume. We need your help to reduce this call volume. Reduction in unnecessary calls will result in agents being able to answer more legitimate calls and provide better feedback.

We are reviewing the top part inquiries (monthly) where the catalog is clear and will be using this newsletter to communicate any necessary information you may need.

For the month of June, one of the items we have been receiving a large volume of calls on, are reman engines. At this time long blocks for the current 3.6L, 5.7L, and 6.4L engines are not available. Please refer to the part catalog and order the specified short block engine listed. We will communicate in a future newsletter once the long block variants are available for the previously mentioned engines.

Please note that the part specifying training has been updated with content changes to help better prepare the parts advisors. The training can be taken at Chrysler Academy under the course code PTSSP2WB. We strongly encourage you to take the training as a refresher in an effort to help reduce the unnecessary call volume.

We appreciate your support and co-operation.

INDEX

From the Editor.....	1
Good Stuff.....	2
Line.....	2
Series / Price Class.....	3
Body Style.....	4
Bookmark Feature.....	6
Computers.....	8
2014 Catalogs In StarParts	9
Contact Information.....	9
Contact Us.....	10





Good Stuff

I mentioned in the June newsletter that feedbacks do not get ignored. I came across an old one that that was not answered and found it particularly interesting, as I have asked the same question. I recently stumbled upon the answer and thought I should share my discovery with you:

I volunteered to do the 2012 DR catalog and one of my suggestions was to get an explanation of what the definitions for LINE, SERIES and Body codes. In the January newsletter you explain how to rollover the area to get the information. I have noticed on some newer vehicles this info is explained but not on many older catalogs. But..... what do the codes mean????? I have searched everywhere I can within dealer connect w/o success. There must be a list of what these codes mean somewhere! Any idea where to find this info?

Thanks
Dennis Madore

Line

A designation within a Vehicle Family of either Marketing Division, number/type of driving wheels or location of the steering wheel.

A single alpha character identifies Passenger Car, Front Wheel Drive (FWD) Truck (Minivan) and Jeep. A single numeric character identifies Rear Wheel Drive (RWD) Truck. For example: K = FWD (Dodge Minivan, U = Right Hand Drive (RHD) 4X4 Jeep and 2 = Dodge 2500 4X2 RWD Truck.

Chrysler Brands	FWD/RWD (LHD)	AWD/4WD (LHD)	FWD/RWD (RHD)	AWD/4WD (RHD)	Comments
Chrysler (Car)	C	F	Z	U	
Chrysler (Minivan)	Y	C	Z	U	
Chrysler (Truck)	1	5	-	-	Currently unique family code (HG)
Dodge (Car)	D	E	B	G	
Dodge (Minivan)	K	D	-	-	
Dodge (Truck)	1,2,3,4,5	6,7,8,9,0	2	6	RHD used on KA but would be an issue on Ram
Jeep	T	J	B	U	
Plymouth (Car)	P	M	-	-	
Plymouth (Minivan)	H	P	-	-	
Eagle	X	F	-	-	



Line continued....

Specify The Vehicle Division to Vehicle Line Relations

Division	Division Characters	Vehicle Line Characters
Chrysler	C	C
		F
		Y
		Z
		U
		1
		5
Dodge	D	D
		E
		B
		G
		K
		0
		1
		2
		3
		4
		5
		6
		7
Ram	R	8
		9
		0
		1
		2
		3
		4
		5
		6

Division	Division Characters	Vehicle Line Characters
Jeep	J	J
		T
		B
		U
Plymouth	P	P
		H
		M
		X
Eagle	E	F
Volkswagen	V	Y
MMC	N	1
		5
Freightliner	F	6
		7
Sterling	S	0
		4
		5
		9
Fiat	X	F
		G
		Z
		L
Alfa Romeo	Y	F
		G
		Z
		L
Lancia	Z	F
		L
		G
		Z

Series / Price Class

A grouping of features or level of decor within a Vehicle Line, typically distinguished by unique price from other vehicles of the same vehicle line and body style (A.K.A. "Price Class"). A single alpha character identifies series. For example: L = Lowline, H = Highline and P = Premium.



Series / Price Class Continued...

Code	Description	Comments
E	Economy	
L	Low	
M	Meduim	
H	Highline	
P	Premium	
S	Sport	
X	Special	
T	Touring	New as of 2010 Model Year
R	Race	New as of 2010 Model Year

Body Style

A general configuration or shape of a vehicle distinguished by characteristics such as number of doors, roof style, or wheel base. Two numeric characters identify body style. For example: 22 = Two Door, 27 = Convertible, and 53 = Long Wheel Base (LWB) Minivan.



Body Style Continued...

Vehicle Family Body Style Codes

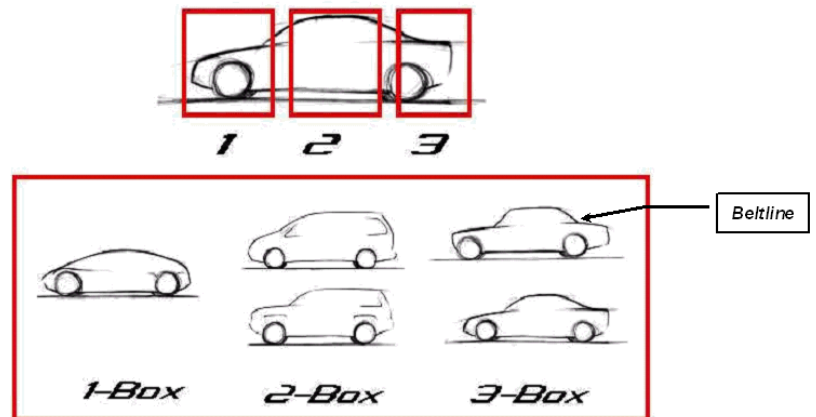
Code	Description	Comments	Examples
01	Van Cab Chassis	Wheel Base #1	Sprinter (VA)
02		Wheel Base #2	Sprinter (VA)
03		Wheel Base #3	Sprinter (VA)
05		Wheel Base #7	Sprinter (VA)
07		Wheel Base #7	Sprinter (VA)
11	Vans	Wheel Base #1	B-Van (AB), Caravan (RS), Sprinter (VA)
12		Wheel Base #2	B-Van (AB), Sprinter (VA)
13		Wheel Base #3	B-Van (AB), Sprinter (VA)
14		Wheel Base #4	Sprinter (VA)
15		Wheel Base #5	Sprinter (VA)
16		Wheel Base #6	Sprinter (VA)
17		Wheel Base #7	Sprinter (VA)
21	2-Door Sedan	Type #1	Old Neon (PL pre 2000MY)
22	2-Door Sedan	Type #2	Sebring/Stratus (ST)
24	2-Door Hatchback		Omni/Horizon (AL), Shadow/Sundance (AP)
27	2-Door Convertible		Sebring (JR/JS), Viper (ZB), Cruiser (PT), Crossfire (ZH)
29	2-Door Coupe		Viper (ZB), Crossfire (ZH)
31	3-Door Club Cab	Wheel Base #1	Old Ram (BE)
32	3-Door Club Cab	Wheel Base #2	Old Ram (BE)
33	4-Door Club Cab	Wheel Base #1	Dakota (ND), Old Ram (BE)
34	4-Door Club Cab	Wheel Base #2	Old Ram (BE)
41	4-Door Sedan/Quad Cab	Type #1; Wheel Base #1	Neon (PL), Sebring/Stratus (JR/JS), Ram SWB (DR)
42	4-Door Sedan/Quad Cab	Type #2; Wheel Base #2	Ram LWB (DR)
43	4-Door Quad Cab	Wheel Base #3	Ram Cab Chassis (DC)
48	4-Door Sedan	Type #3	300 (LX)
44	4-Door Hatchback	Type #1	Cruiser (PT)
49	4-Door Hatchback	Type #2	Magnum (LX), Caliber (PM)
47	4-Door Convertible		
51	Wagons	Wheel Base #1	B-Van (AB), Sprinter (VA)
52		Wheel Base #2	B-Van (AB), T&C/Caravan (RS), Sprinter (VA)
53		Wheel Base #3	B-Van (AB), T&C/Caravan (RS), Sprinter (VA)
55		Wheel Base #5	Sprinter (VA)
57		Wheel Base #7	Sprinter (VA)
61	Regular Cab	Wheel Base #1	Dakota (ND), Ram SWB (DR)
62		Wheel Base #2	Ram LWB (DR)
63		Wheel Base #3	Ram Cab Chassis (DC/DM)
64		Wheel Base #4	Ram Cab Chassis (DC/DM)
65		Wheel Base #5	Ram Cab Chassis (DC/DM)
66		Wheel Base #6	Ram Cab Chassis (DC/DM)
72	2-Door SUV		Cherokee (XJ)
74	4-Door SUV	Type #1	Durango (HB), Grand Cherokee (WK)
75	4-Door SUV	Type #2	
77	2-Door Open Body	SWB	Wrangler (TJ)
78	2-Door Open Body	LWB	Unlimited (TJ)
81	4-Door Mega Cab	Type #1	Ram (DH/D1)
84	4-Door Quad Cab	Type #2	Dakota (ND)
91	Crew Cab	Wheel Base #1	Ram (DS/DJ/D2)
93	Crew Cab	Wheel Base #3	Ram (DD/DP) & Sprinter Cab Chassis (VB)
94	Crew Cab	Wheel Base #4	Ram (DD/DP) & Sprinter Cab Chassis (VB)
95	Crew Cab	Wheel Base #5	Sprinter Cab Chassis (VB)



Body Style Continued...

Body Styles

- 44/49 is used for the 2-Box design (4-Door Hatchback) and 41/48 for the 3-Box design (4-Door Sedan)
- 44/41 is used for the traditional beltline height and 49/48 for a higher beltline design



I found the definition and charts of each Line, Series / Price Class and Body Style to be very helpful in understanding the concept for each of the categories. Hopefully this information will provide you with a greater understanding as well.

Copies of these documents can now be found in the StarParts Library / Mopar Reference Library / Vehicle Family Model Coding

Bookmark Feature

It would be a nice feature to be able to add VIN numbers without it overtaking the previous one. I would like to be able to add VINS and see a list of all VINS without having to click on NEW every time. Why can't the system just add a new VIN and move the others down the list, and have a max of say 50 VIN numbers and put the newest on top and when you hit 50 the oldest one is removed?

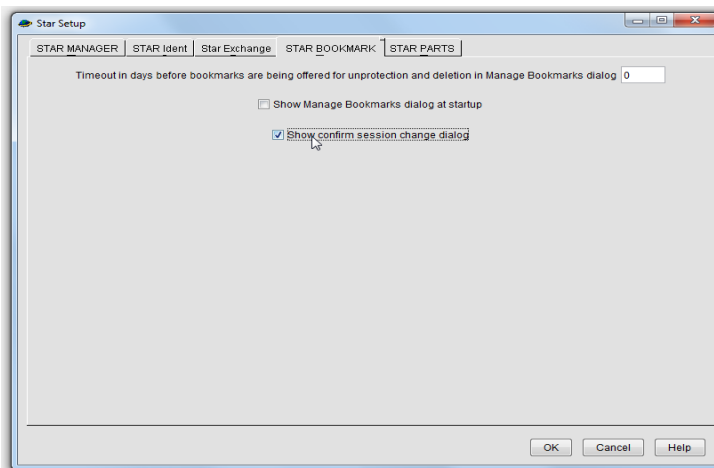
Damon Reeher
Peters Chrysler-Jeep-Dodge



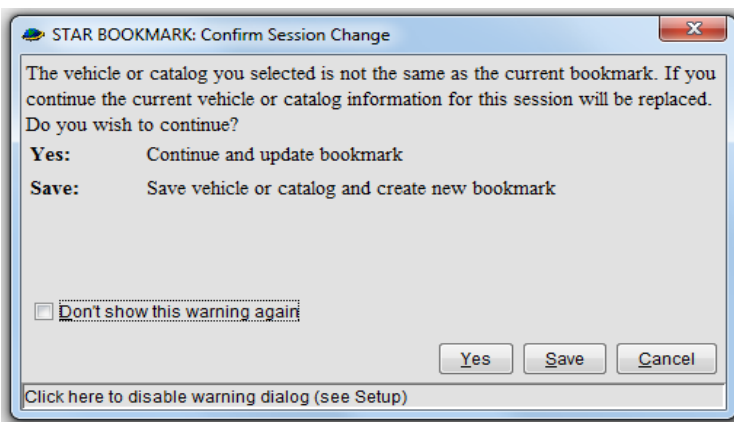
Bookmark Feature continued...

This feature, with the exception of the top 50 VIN numbers, already exists in StarParts.

Click on the Setup button in the Tools Menu. The Setup page will open to the Star Bookmark tab. Check the box for "Show confirm session change dialog". Then click the OK button to save your selection.



Instead of clicking on New every time you wish to enter a new VIN, click on Shortcut, enter the VIN then either click OK or hit the enter key and this pop-up will appear:



With this screen you will have the option to overwrite the current session or save the current session and create a new one. Do not check the "Don't show this warning again". If this box is checked you will not be asked this question and the current session will be replaced with the new vehicle information being entered.



Computers

Dell/MOPAR Wi/Tech and Star Parts Purchase Program through MarketCenter



The power to do more

Dell recommends Windows 7 Professional.

MOPAR and Dell have partnered to provide dealers with systems that meet specifications for Wi/Tech and Star Parts for purchase through MarketCenter. The E5430 and OptiPlex 7010 listed below have been approved by MOPAR for your Wi/Tech/Star Parts needs.



E5430 Wi/Tech Notebook

- Intel® Core™ i7-3520M Processor 2.9GHz, 4M cache
- 4.0GB, DDR3-1600MHz SDRAM, 2 DIMM
- 500GB 7200rpm Hard Drive
- Windows® 7 Professional w/Media 32bit
- 8X DVD Drive
- 14.0" HD (1366x768) Anti-Glare WLED-backlit LCD
- Service - 3yr Next Day Business, Parts and Labor

Promo price
\$888⁰⁰



Monitor not included

OptiPlex 7010 Star Parts

- Intel® Core™ i7-3770 Processor 3.4GHz with 8MB cache
- 4GB, NON-ECC, 1600MHZ DDR3, 2DIMM Ram
- 500GB 3.5 6Gb/s SATA with 16MB DataBurst Cache
- 1GB AMD Radeon HD 7570 Video Card
- Windows® 7 Professional w/Media 32bit
- 16X DVD-ROM SATA Drive
- Monitor Not Included With Promo Cost.
- Service - 3yr Next Day Business, Parts and Labor

Promo price
\$789⁰⁰



MARKET
CENTER

CALL OR CLICK TO ORDER
866-746-4977 option # 3 for sales
and www.dell.com/chryslermc
MEMBER ID: AF13398544

Hours: 7:30am - 6:30pm cst.

ALL ORDERS ARE SUBJECT TO APPROVAL AND ACCEPTANCE BY DELL. Offer subject to your company's continuing participation in the Dell Corporate Affiliate Purchase Program. Pricing, specifications, availability or other terms of offer may be withdrawn or changed without notice. Taxes, fees, shipping, handling charges and any applicable resending charges are extra, and vary. Valid for U.S. Dell Corporate Affiliate Purchase Program new purchases only, and subject to restrictions in your applicable contract, if any. For copy of our Hardware Warranty, visit Dell USA LP. Item Variations: One Dell May, Round-trip, 18, 18000 or one some Dell components. Significant system memory may be used to support graphics, operating or system memory size and other factors. GB means 1 billion bytes and TB means 1 trillion bytes, actual capacity may vary with installed material and operating environment and will be less. LIMIT 15 DISCOUNTS OR 15% OFF TOTAL. DELL reserves the right to cancel orders arising from pricing or other errors. Dell, Dell logo, Latitude and the Dell logo are trademarks of Dell Inc. Other trademarks and trade names may be used in this document to refer to either the entities claiming the marks and names or their products. Dell disclaims proprietary interest in the marks and names of others. © 2013 Dell Inc. All rights reserved. Reproduction or translation of any part of this document that is not permitted by U.S. copyright law without the written permission of Dell Inc. is unlawful and strictly forbidden.

Windows 7
Professional





2014 Catalogs In StarParts

We have started to release catalogs in StarParts for the 2014 model year:

BF – Fiat 500L
KL – Jeep Cherokee
MK – Jeep Compass / Patriot
WK – Jeep Grand Cherokee

To be released by Mid-July:

DX – Ram Truck (Mexico)
DS – Ram 1500 Pickup

Contact Information

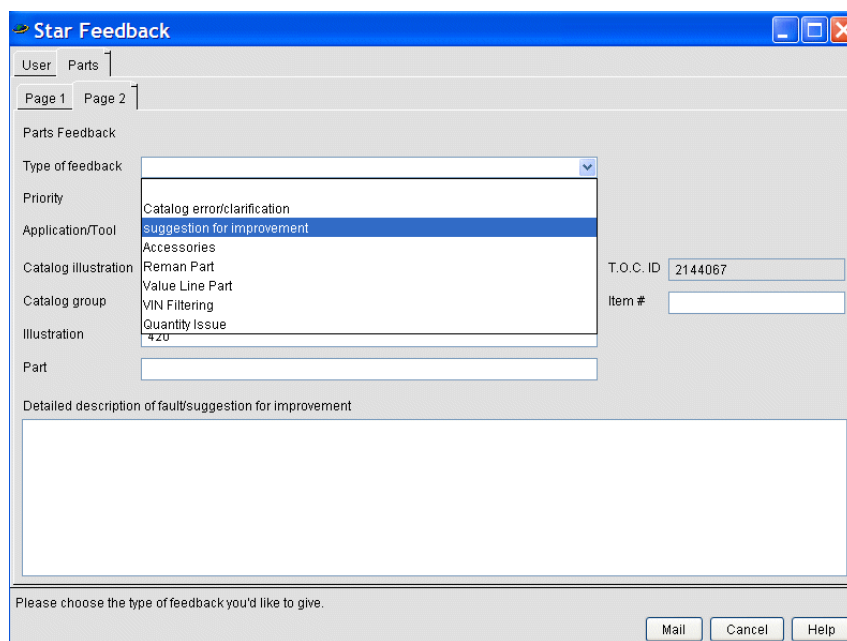
We have received several emails and feedbacks regarding the incorrect contact information that is automatically filled in on the feedback form. We are aware of this and are working to resolve the issue.



Contact Us

Please send in your suggestions to make this newsletter more valuable to you.

Use the Feedback Button on your StarParts menu and select **Suggestions for Improvement** as the "Type of Feedback" to record your thoughts.



The screenshot shows a web form titled "Star Feedback". It has tabs for "User" and "Parts", with "Parts" selected. Below the tabs are "Page 1" and "Page 2" links. The form is divided into sections: "Parts Feedback", "Type of feedback" (a dropdown menu with "suggestion for improvement" selected), "Priority", "Application/Tool", "Catalog illustration", "Catalog group", "Illustration", "Part", "T.O.C. ID" (with value 2144067), "Item #", and a large text area for "Detailed description of fault/suggestion for improvement". At the bottom, there is a prompt "Please choose the type of feedback you'd like to give." and three buttons: "Mail", "Cancel", and "Help".

It is completely optional to include your contact information in the Description field, but it would allow us to contact you for further information and clarification to assure we address your concern properly.